

B

C

E

公差表

REV	ECN NO	LOCATIONS	DESCRIPTION	DATE	CHANGER
A			新版本	2016-05-18	李国常

SPECIFICATIONS

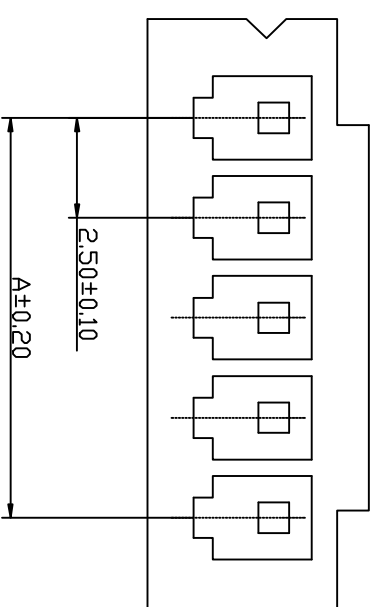
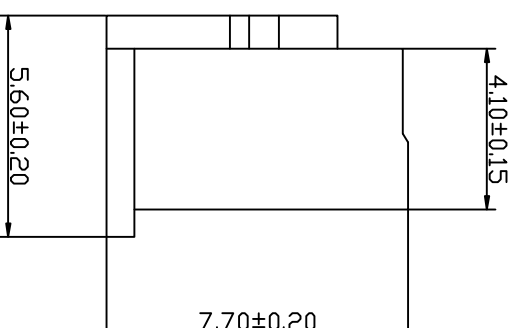
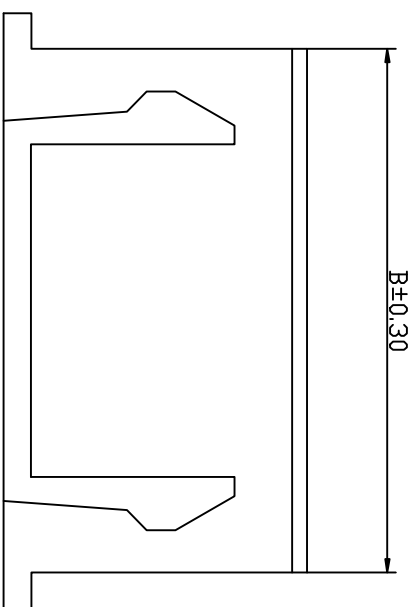
- Voltage rating: 250V AC, DC
- Current rating: 3A, AC, DC
- Withstanding Voltage: 1000V AC/minute
- Insulation resistance: 1000MΩ min
- Temperature range: -40℃~+85℃
- Contact resistance: 10MΩ max

HOUSING

- Part No: H2501-NP
- Poles: 02-20
- Material: Nylon 66 UL94V-0

4

4



Part No	Dimensions (mm)	
	A	B
H2501-02	2.50	5.70
H2501-03	5.00	8.20
H2501-04	7.50	10.70
H2501-05	10.00	13.20
H2501-06	12.50	15.70
H2501-07	15.00	18.20
H2501-08	17.50	20.70
H2501-09	20.00	23.20
H2501-10	22.50	25.70
H2501-11	25.00	28.20
H2501-12	27.50	30.70
H2501-13	30.00	33.20
H2501-14	32.50	35.70
H2501-15	35.00	38.20
H2501-16	37.50	40.70
H2501-17	40.00	43.20
H2501-18	42.50	45.70
H2501-19	45.00	48.20
H2501-20	47.50	50.70

KLT 深圳市康利通电子科技有限公司

成品规格图

Tolerance

0±0.30

.0±0.25

.00±0.20

.000±0.015

1

TITLE	成品规格图		Tolerance	
CHECKED BY	DATE	SCALE	VER No	SIZE
	2016-05-18	1:1	A	A4
DRAWN BY	UNIT:mm			
李国常	PART No	H2501-NP		

B

C

D

E

F

B

C

E

公差表

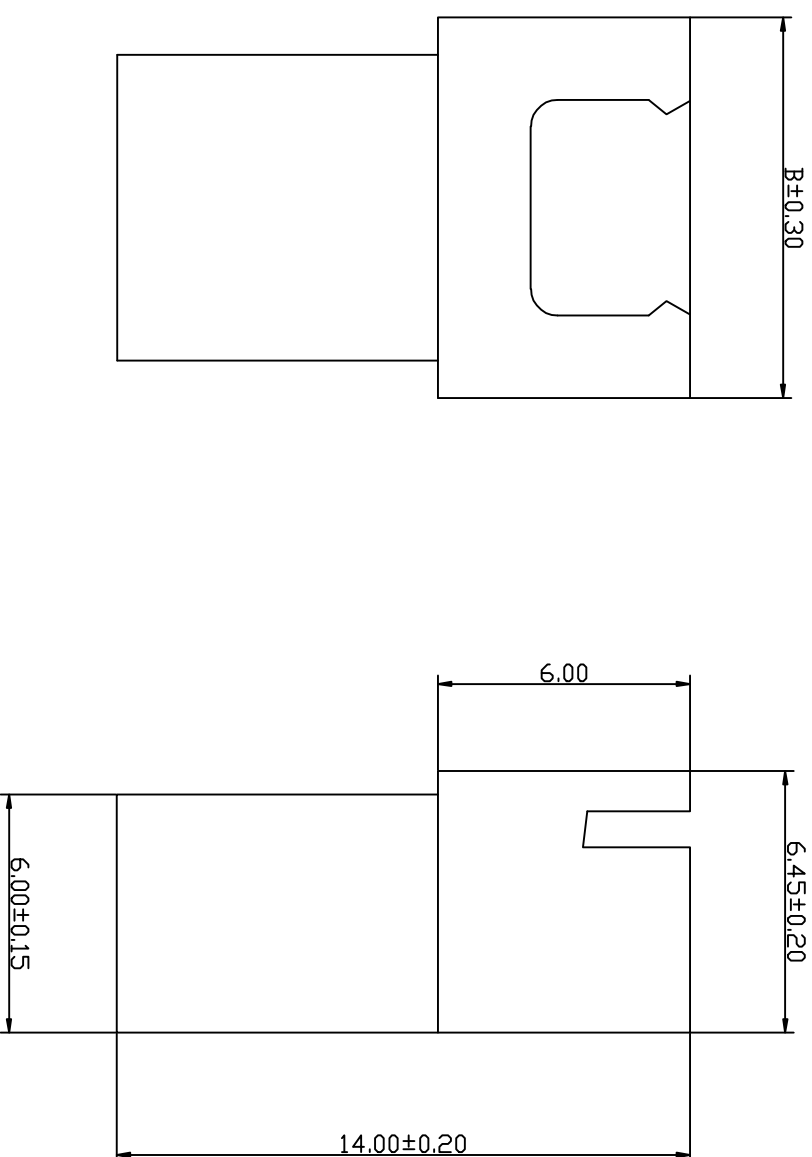
REV	ECN NO	LOCATIONS	DESCRIPTION	DATE	CHANGER
A			新版本	2016-05-18	李国常

SPECIFICATIONS

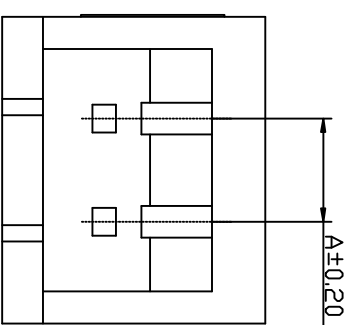
- Voltage rating: 250V AC, DC
- Current rating: 3A, AC, DC
- Withstanding Voltage: 1000V AC/minute
- Insulation resistance: 1000MΩ min
- Temperature range: -40℃~+85℃
- Contact resistance: 10MΩ max

HOUSING

- Part No: H2502-NP
- Poles: 02-20
- Material: Nylon 66 UL94V-0



Part No	Dimensions (mm)	
	A	B
H2502-02	2.50	7.50
H2502-03	5.00	10.00
H2502-04	7.50	12.50
H2502-05	10.00	15.00
H2502-06	12.50	17.50
H2502-07	15.00	20.00
H2502-08	17.50	22.50
H2502-09	20.00	25.00
H2502-10	22.50	27.50
H2502-11	25.00	30.00
H2502-12	27.50	32.50
H2502-13	30.00	35.00
H2502-14	32.50	37.50
H2502-15	35.00	40.00
H2502-16	37.50	42.50
H2502-17	40.00	45.00
H2502-18	42.50	47.50
H2502-19	45.00	50.00
H2502-20	47.50	52.00



KLT 深圳市康利通电子科技有限公司

TOLERANCE

0±0.30

.0±0.25

.00±0.20

.000±0.015

VER No SIZE

A A4

成品规格图

TITLE				
CHECKED BY	DATE	SCALE	VER No	SIZE
	2016-05-18	1:1		
DRAWN BY	UNIT:mm			
李国常				
PART No	H2502-NP			

4

4

B

C

D

E

F

1

B

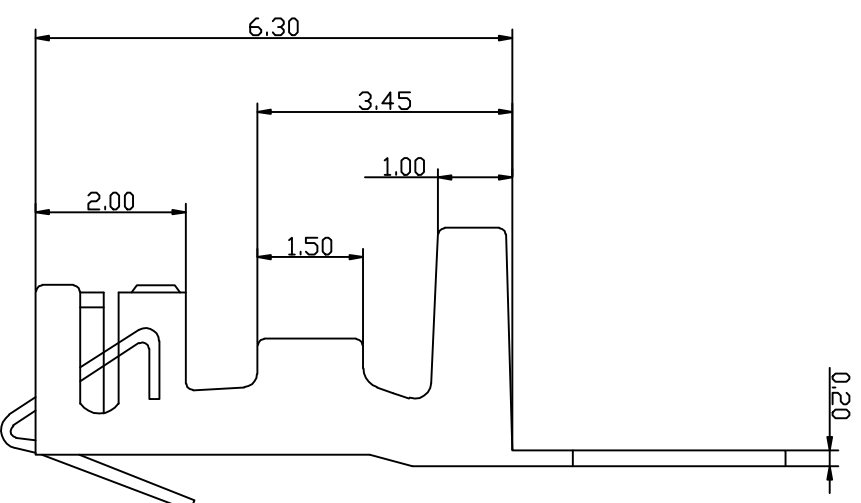
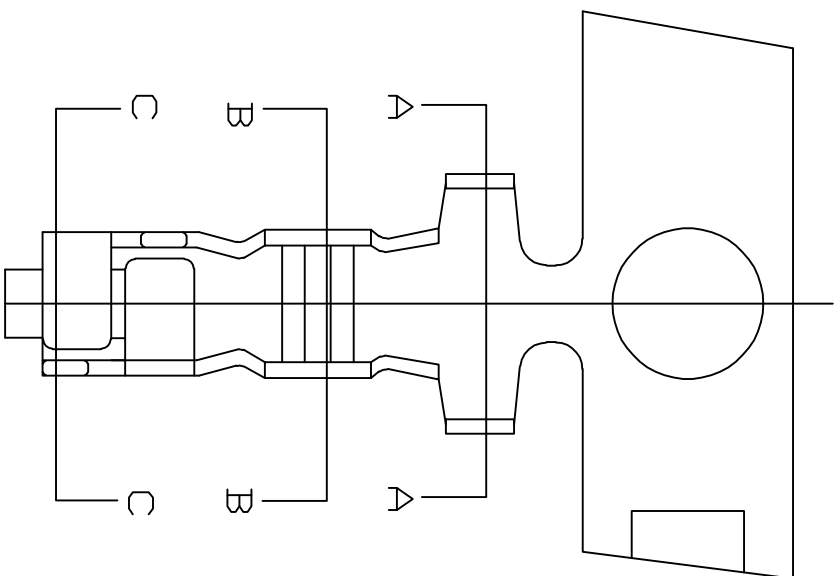
C

E

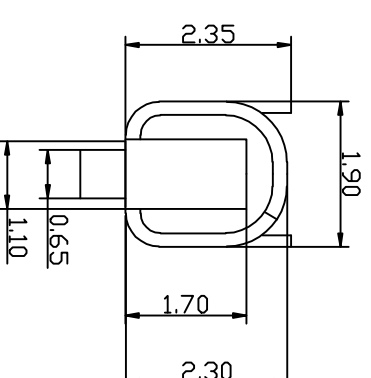
公差表

REV	ECN NO	LOCATIONS	DESCRIPTION	DATE	CHANGER
A			新版本	2016-05-18	李国常

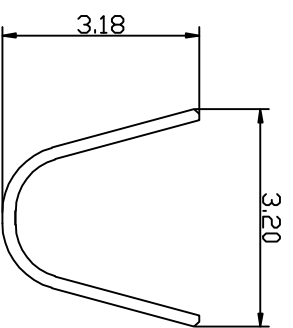
4



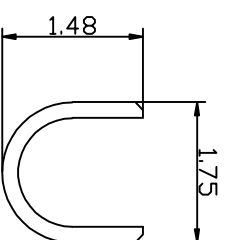
- SPECIFICATIONS**
- Voltage rating: 250V AC, DC
 - Current rating: 3A, AC, DC
 - Withstanding Voltage: 1000V AC/minute
 - Insulation resistance: 1000MΩ min
 - Temperature range: -40°C~+85°C
 - Contact resistance: 10MΩ max
- TERMINAL**
- Part No: T2501PT
 - Applicable wire: AWG#22-#28
 - Material: Phosphor Bronze
 - Finish: Tin plated



SEC: C-C



SEC: A-A



SEC: B-B

KLT 深圳市康利通电子科技有限公司

TITLE

成品规格图

TOLERANCE

0±0.30

.0±0.25

.00±0.20

.000±0.015

1

CHECKED BY	DATE	SCALE	VER No	SIZE
	2016-05-18	1:1		

DRAWN BY	UNIT:mm	THIRD ANGLE	UNIT:mm	VER No	SIZE
李国常				A	A4

PART No	T2501PT

B

C

D

E

F

4

B

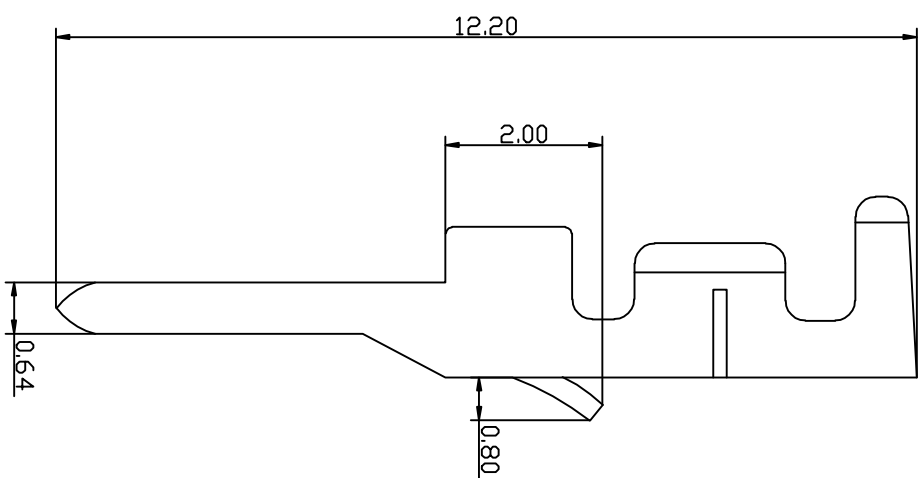
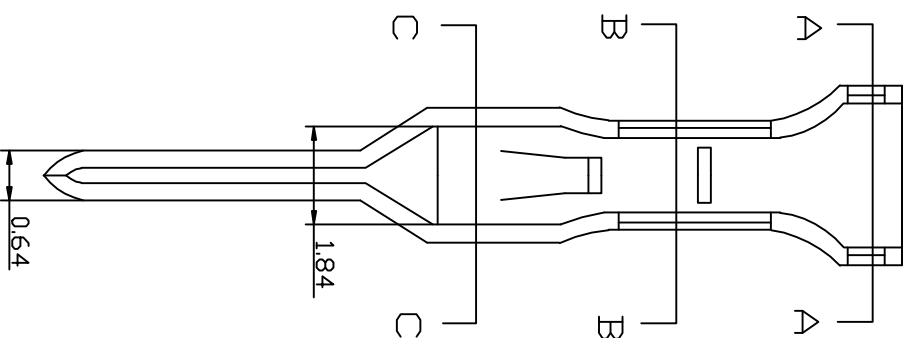
C

E

公差表

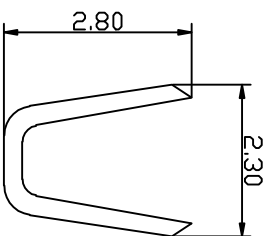
REV	ECN NO	LOCATIONS	DESCRIPTION	DATE	CHANGER
A			新版本	2016-05-18	李国常

4

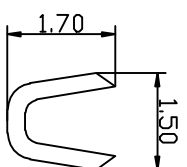


- SPECIFICATIONS
- Voltage rating: 250V AC, DC
 - Current rating: 3A, AC, DC
 - Withstanding Voltage: 1000V AC/minute
 - Insulation resistance: 1000MΩ min
 - Temperature range: -40℃~+85℃
 - Contact resistance: 10MΩ max
- TERMINAL
- Part No: T2502PT
 - Applicable wire: AWG#22-#28
 - Material: Phosphor Bronze
 - Finish: Tin plated

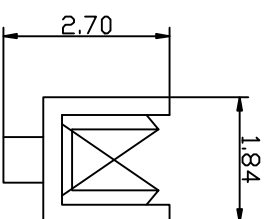
4



SEC: A-A



SEC: B-B



SEC: C-C

KLT 深圳市康利通电子科技有限公司

成品规格图

Tolerance

0±0.30

.0±0.25

.00±0.20

.000±0.015

1

TITLE	DATE	SCALE	VER No	SIZE
CHECKED BY	2016-05-18	1:1		
DRAWN BY	UNIT:mm		A	A4
李国常	PART No	T2502PT		

B

C

D

E

F

B

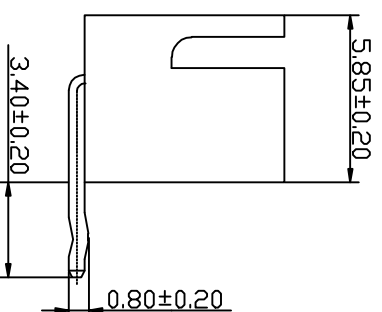
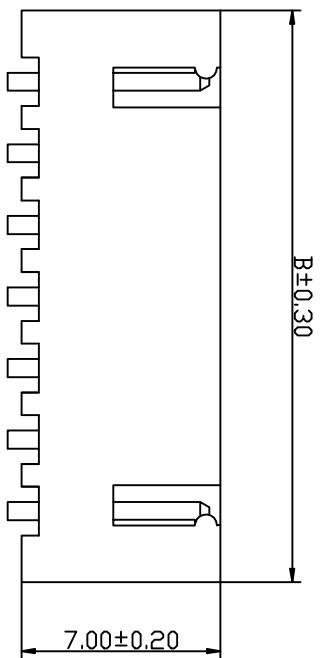
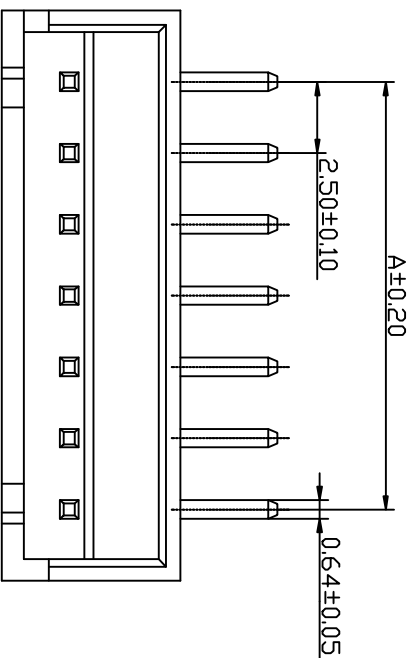
C

E

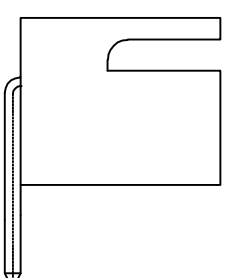
公差表

REV	ECN NO	LOCATIONS	DESCRIPTION	DATE	CHANGER
A			新版本	2016-05-18	李国常

4



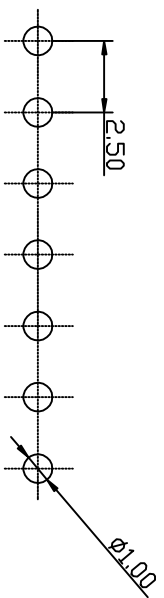
TYPE 1



TYPE 2

Part No	Dimensions (mm)	
	A	B
W2501R-02	2.50	7.50
W2501R-03	5.00	10.00
W2501R-04	7.50	12.50
W2501R-05	10.00	15.00
W2501R-06	12.50	17.50
W2501R-07	15.00	20.00
W2501R-08	17.50	22.50
W2501R-09	20.00	25.00
W2501R-10	22.50	27.50
W2501R-11	25.00	30.00
W2501R-12	27.50	32.50
W2501R-13	30.00	35.00
W2501R-14	32.50	37.50
W2501R-15	35.00	40.00
W2501R-16	37.50	42.50
W2501R-17	40.00	45.00
W2501R-18	42.50	47.50
W2501R-19	45.00	50.00
W2501R-20	47.50	52.50

- SPECIFICATIONS**
- Voltage rating: 250V AC, DC
 - Current rating: 3A, AC, DC
 - Withstanding Voltage: 1000V AC/minute
 - Insulation resistance: 1000MΩ min
 - Temperature range: -40℃~+85℃
 - Contact resistance: 20MΩ max
- WAFER
- Part No: W2501R-NP
 - Poles: 02-20
 - Material: Nylon 66 UL94V-0
 - Pin Material: Brass /Tin-plated



P.C.B LAYOUT

KLT 深圳市康利通电子科技有限公司

TOLERANCE

0±0.30

.0±0.25

.00±0.20

.000±0.015

TITLE	成品规格图		TOLERANCE	
CHECKED BY	DATE	SCALE	VER No	SIZE
	2016-05-18	1:1	A	A4

DRAWN BY	UNIT:mm			
----------	---------	--	--	--

李国常	PART No	W2501R-NP
-----	---------	-----------

B

C

D

E

F

4

1

B

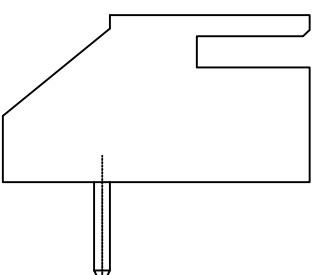
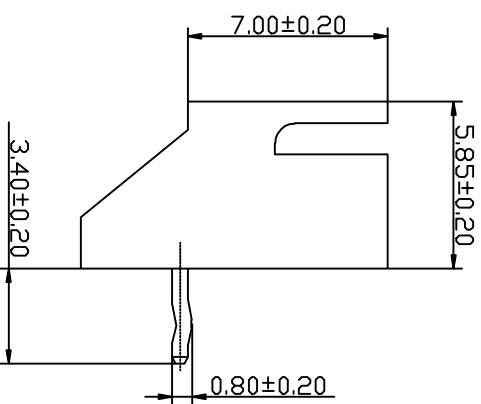
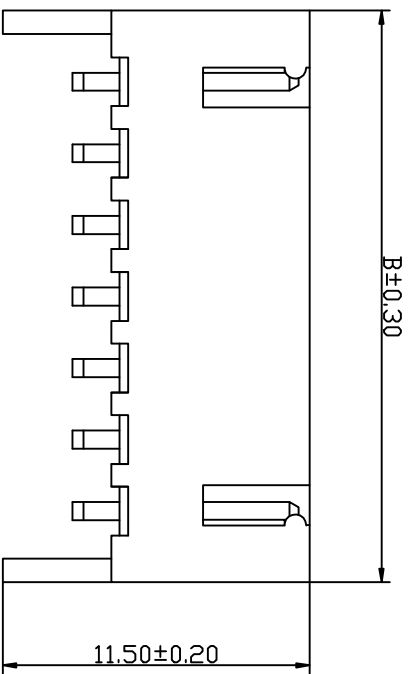
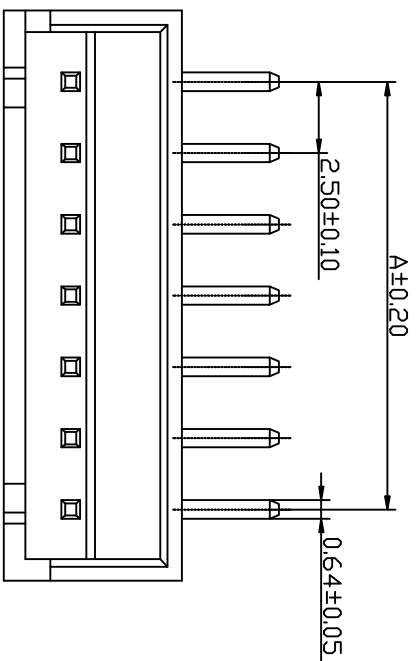
C

E

公差表

REV	ECN NO	LOCATIONS	DESCRIPTION	DATE	CHANGER
A			新版本	2016-05-18	李国常

4

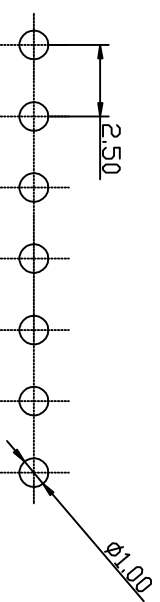


TYPE 1

TYPE 2

Part No	Dimensions (mm)	
	A	B
W2501RT-02	2.50	7.50
W2501RT-03	5.00	10.00
W2501RT-04	7.50	12.50
W2501RT-05	10.00	15.00
W2501RT-06	12.50	17.50
W2501RT-07	15.00	20.00
W2501RT-08	17.50	22.50
W2501RT-09	20.00	25.00
W2501RT-10	22.50	27.50
W2501RT-11	25.00	30.00
W2501RT-12	27.50	32.50
W2501RT-13	30.00	35.00
W2501RT-14	32.50	37.50
W2501RT-15	35.00	40.00
W2501RT-16	37.50	42.50
W2501RT-17	40.00	45.00
W2501RT-18	42.50	47.50
W2501RT-19	45.00	50.00
W2501RT-20	47.50	52.50

- SPECIFICATIONS**
- Voltage rating: 250V AC, DC
 - Current rating: 3A, AC, DC
 - Withstanding Voltage: 1000V AC/minute
 - Insulation resistance: 1000MΩ min
 - Temperature range: -40℃~+85℃
 - Contact resistance: 20MΩ max
- WAFER
- Part No: W2501RT-NP
 - Poles: 02-20
 - Material: Nylon 66 UL94V-0
 - Pin Material: Brass /Tin-plated



P.C.B LAYOUT

KLT 深圳市康利通电子科技有限公司

TOLERANCE

0±0.30

.0±0.25

.00±0.20

.000±0.015

VER No SIZE

A A4

TITLE	成品规格图	
CHECKED BY	DATE	SCALE
DRAWN BY	UNIT:mm	
PART No	W2501RT-NP	

李国常

2016-05-18

1:1

4

A4

B

C

D

E

F

1

4

B

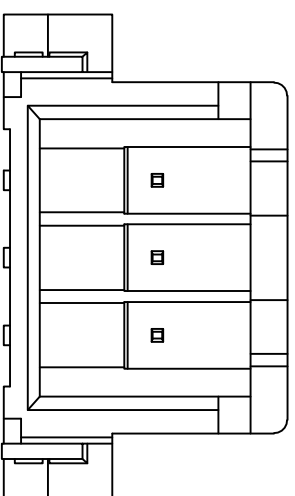
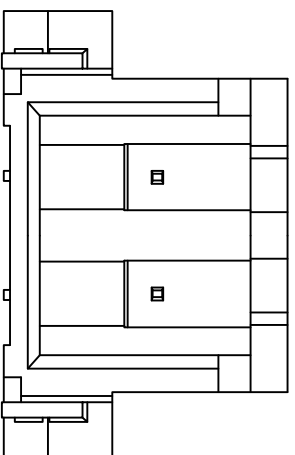
C

E

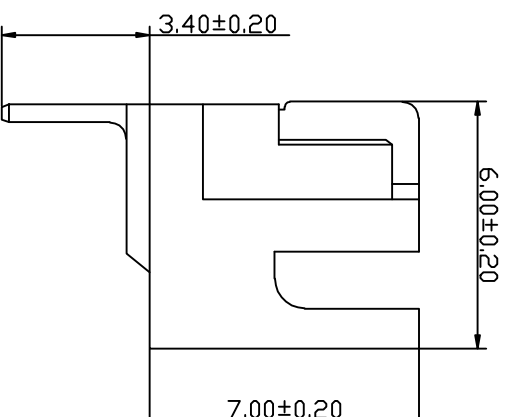
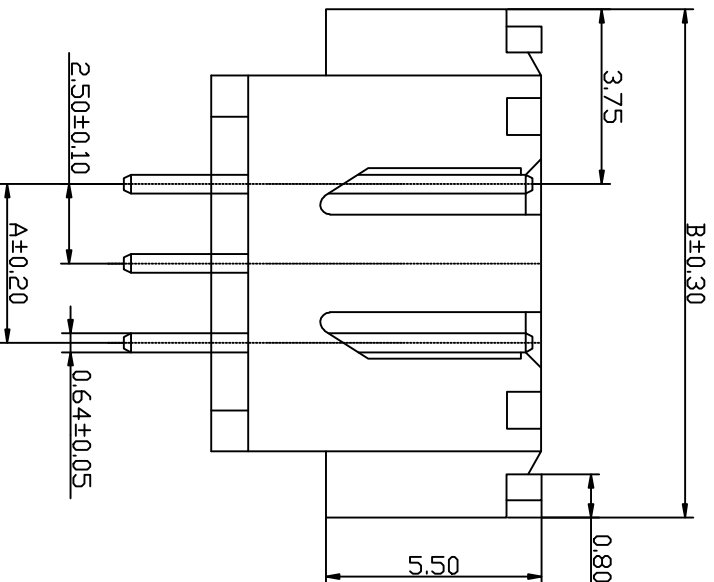
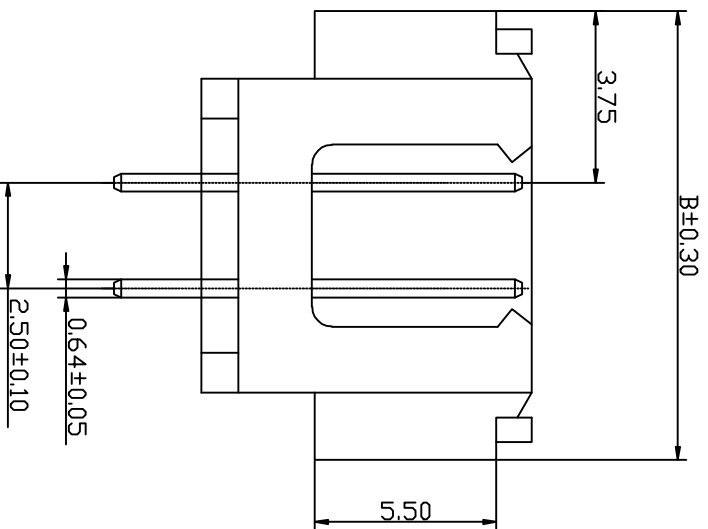
公差表

REV	ECN NO	LOCATIONS	DESCRIPTION	DATE	CHANGER
A			新版本	2016-05-18	李国常

4



4



Part No	Dimensions (mm)	
	A	B
W2501SR-02	2.50	10.00
W2501SR-03	5.00	12.50
W2501SR-04	7.50	15.00
W2501SR-06	12.50	20.00

- SPECIFICATIONS**
- Voltage rating: 250V AC, DC
 - Current rating: 3A, AC, DC
 - Withstanding Voltage: 1000V AC/minute
 - Insulation resistance: 1000MΩ min
 - Temperature range: -40℃~+85℃
 - Contact resistance: 20MΩ max
- WAFER**
- Part No: W2501SR-NP
 - Poles: 02-06
 - Material: Nylon 66 UL94V-0
 - Pin Material: Brass /Tin-plated

KLT 深圳市康利通电子科技有限公司

TOLERANCE

0±0.30

.0±0.25

.00±0.20

.000±0.015

1

成品规格图

TITLE	成品规格图		TOLERANCE	
CHECKED BY	DATE	SCALE	VER No	SIZE
	2016-05-18	1:1	A	A4
DRAWN BY	UNIT:mm			
李国常	PART No	W2501SR-NP		

B

C

D

E

F

B

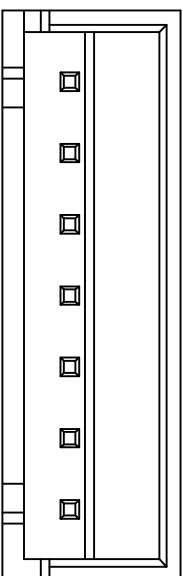
C

E

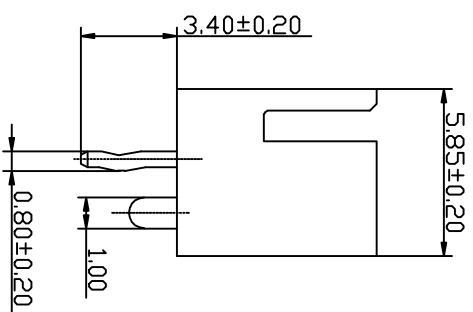
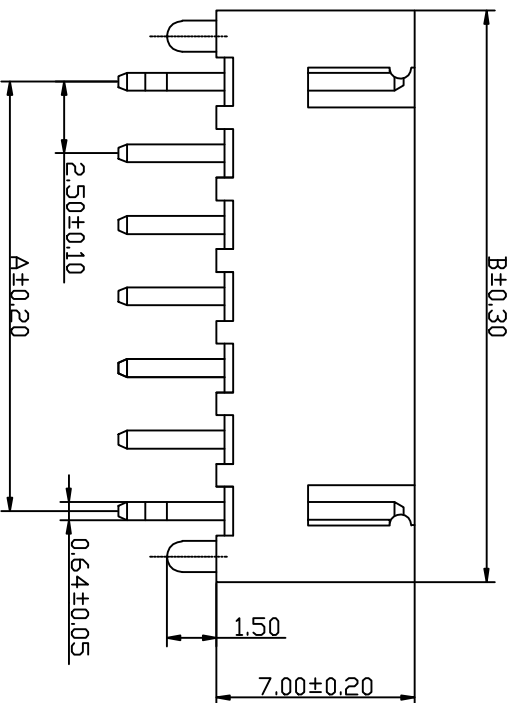
公差表

REV	ECN NO	LOCATIONS	DESCRIPTION	DATE	CHANGER
A			新版本	2016-05-18	李国常

4

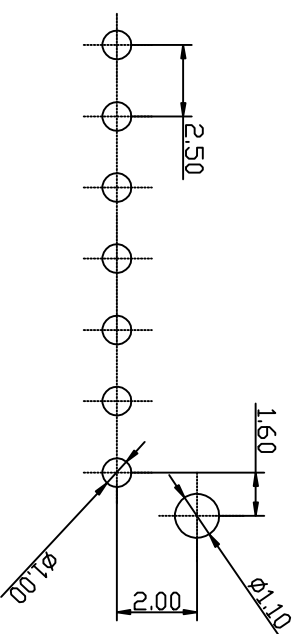


4



- SPECIFICATIONS**
- Voltage rating: 250V AC, DC
 - Current rating: 3A, AC, DC
 - Withstanding Voltage: 1000V AC/minute
 - Insulation resistance: 1000MΩ min
 - Temperature range: -40℃~+85℃
 - Contact resistance: 20MΩ max
- WAFER**
- Part No: W2501VD-NP
 - Poles: 02-20
 - Material: Nylon 66 UL94V-0
 - Pin Material: Brass /Tin-plated

Part No	Dimensions (mm)	
	A	B
W2501VD-02	2.50	7.50
W2501VD-03	5.00	10.00
W2501VD-04	7.50	12.50
W2501VD-05	10.00	15.00
W2501VD-06	12.50	17.50
W2501VD-07	15.00	20.00
W2501VD-08	17.50	22.50
W2501VD-09	20.00	25.00
W2501VD-10	22.50	27.50
W2501VD-11	25.00	30.00
W2501VD-12	27.50	32.50
W2501VD-13	30.00	35.00
W2501VD-14	32.50	37.50
W2501VD-15	35.00	40.00
W250VD-16	37.50	42.50
W2501VD-17	40.00	45.00
W2501VD-18	42.50	47.50
W2501VD-19	45.00	50.00
W2501VD-20	47.50	52.50



P.C.B LAYOUT

KLT 深圳市康利通电子科技有限公司

TOCERANCE

0±0.30

.0±0.25

.00±0.20

.000±0.015

VER No SIZE

A A4

TITLE	成品规格图		TOCERANCE	
CHECKED BY	DATE	SCALE	VER No	SIZE
DRAWN BY	UNIT:mm	1:1	A	A4
李国常	2016-05-18			
PART No	W2501VD-NP			

B

C

D

E

F

1

B

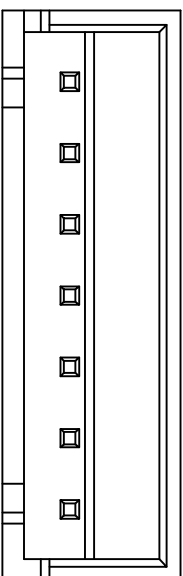
C

E

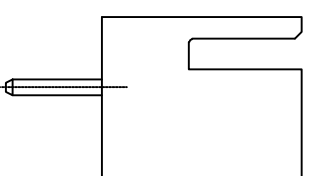
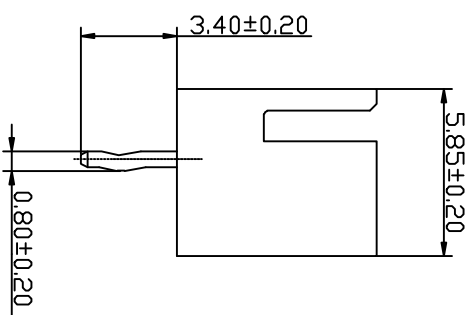
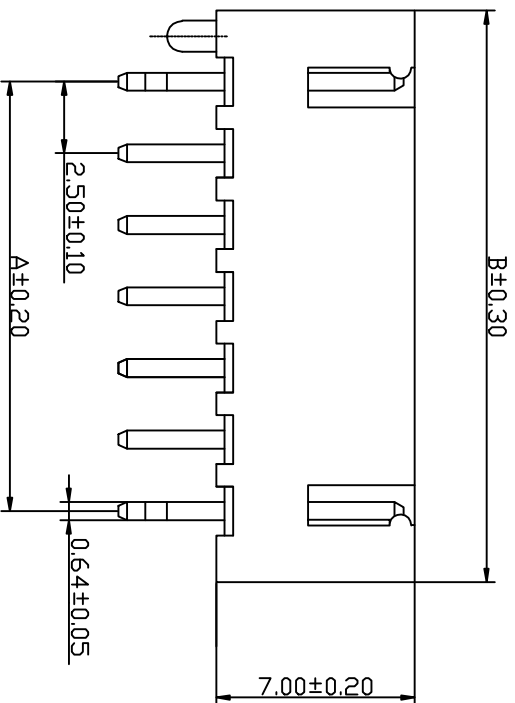
公差表

REV	ECN NO	LOCATIONS	DESCRIPTION	DATE	CHANGER
A			新版本	2016-05-18	李国常

4



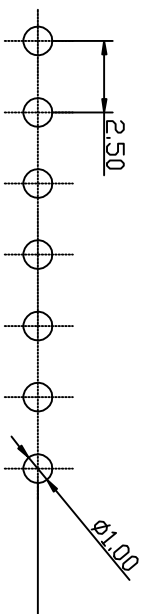
4



TYPE 1

TYPE 2

Part No	Dimensions (mm)	
	A	B
W2501V-02	2.50	7.50
W2501V-03	5.00	10.00
W2501V-04	7.50	12.50
W2501V-05	10.00	15.00
W2501V-06	12.50	17.50
W2501V-07	15.00	20.00
W2501V-08	17.50	22.50
W2501V-09	20.00	25.00
W2501V-10	22.50	27.50
W2501V-11	25.00	30.00
W2501V-12	27.50	32.50
W2501V-13	30.00	35.00
W2501V-14	32.50	37.50
W2501V-15	35.00	40.00
W250V-16	37.50	42.50
W2501V-17	40.00	45.00
W2501V-18	42.50	47.50
W2501V-19	45.00	50.00
W2501V-20	47.50	52.50



P.C.B LAYOUT

KLT 深圳市康利通电子科技有限公司

TOLERANCE

0±0.30

.0±0.25

.00±0.20

.000±0.015

TITLE	成品规格图			
CHECKED BY	DATE	SCALE	VER No	SIZE
	2016-05-18	1:1	A	A4

DRAWN BY	UNIT:mm			
李国常				

PART No	W2501V-NP			
---------	-----------	--	--	--

B

C

D

E

F

1