

B

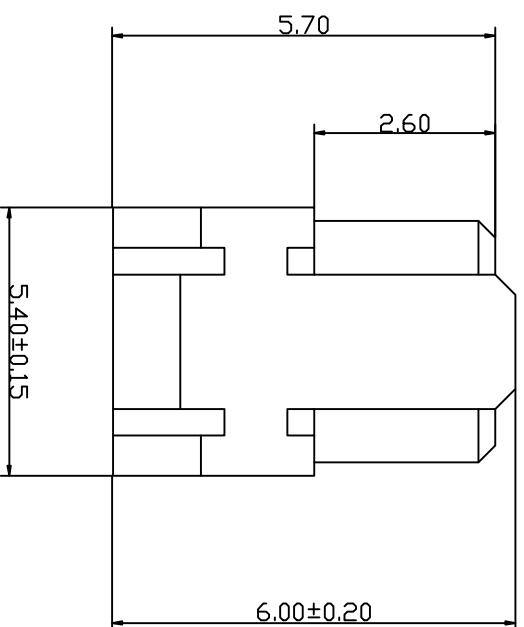
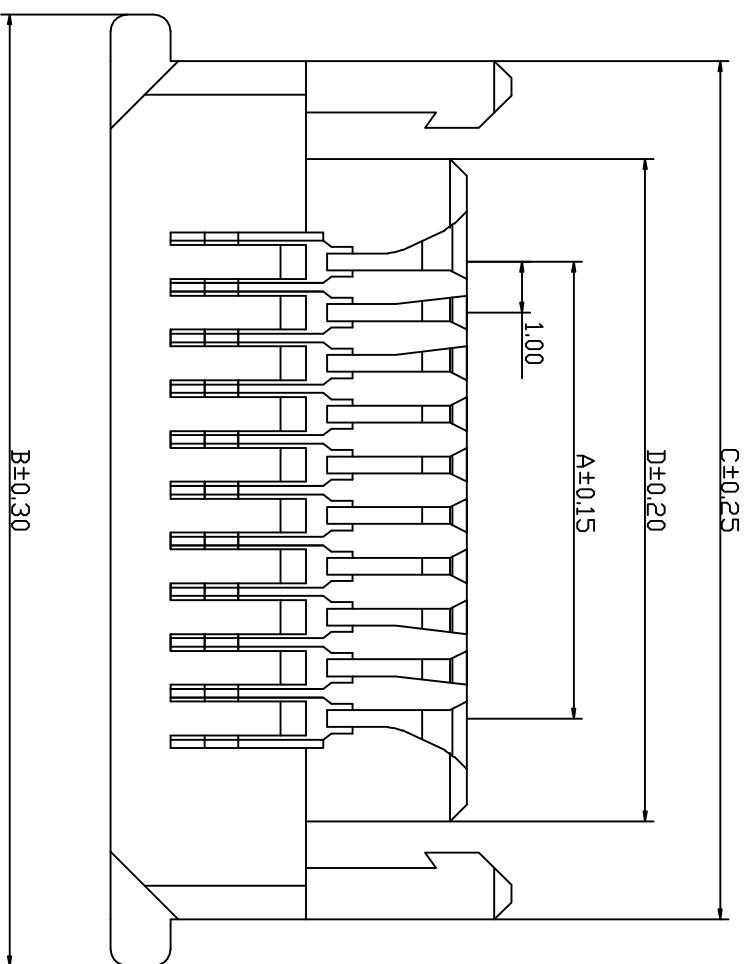
C

E

公差表

REV	ECN NO	LOCATIONS	DESCRIPTION	DATE	CHANGER
A			新版本	2016-04-11	李国常

4



- SPECIFICATIONS
- Voltage rating: 50V AC, DC
 - Current rating: 1A, AC, DC
 - Withstanding Voltage: 1000V AC/minute
 - Insulation resistance: 100MΩ min
 - Temperature range: -40℃~+85℃
 - Contact resistance: 20MΩ max

- HOUSING
- Part No: H1009-2*NP
 - Poles: 20-50
 - Material: Nylon 46 UL94V-0

Part No	Dimensions (mm)			
	A	B	C	D
H1009-2*10	9.00	15.70	14.70	10.70
H1009-2*15	14.00	20.70	19.70	15.70
H1009-2*20	19.00	25.70	24.70	20.70
H1009-2*25	24.00	30.70	29.70	25.70

KLT 深圳市康利通电子科技有限公司

成品规格图

TOLERANCE

0±0.30

.0±0.25

.00±0.20

.000±0.015

TITLE	DATE	SCALE	VER No	SIZE
CHECKED BY	2016-04-11	1:1		
DRAWN BY	UNIT:mm		A	A4
李国常	PART No	H1009-2*NP		

B

C

D

E

F

1

4

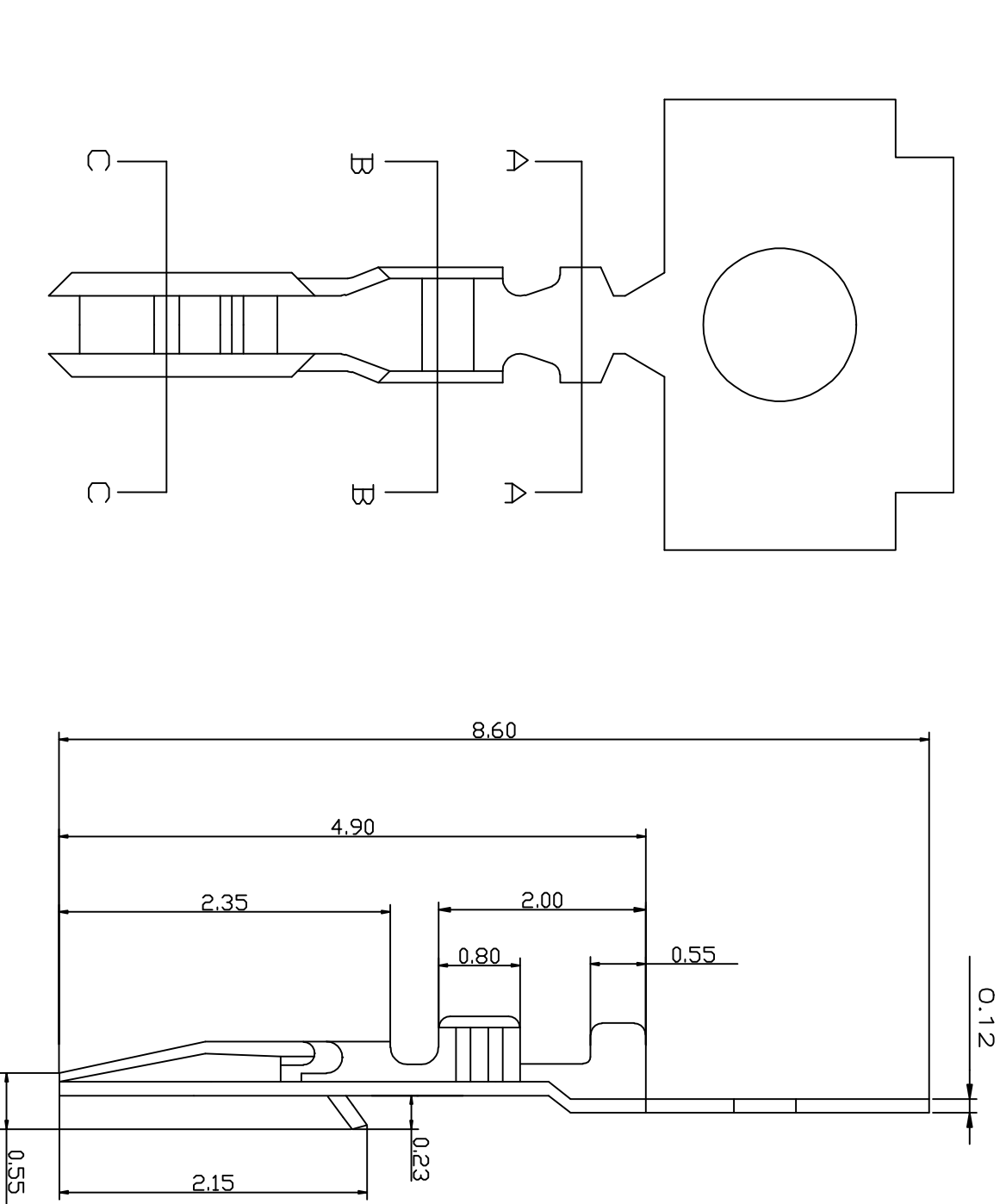
B

C

E

公差表

REV	ECN NO	LOCATIONS	DESCRIPTION	DATE	CHANGER
A			新版本	2016-04-11	李国常



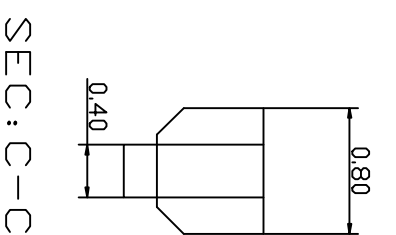
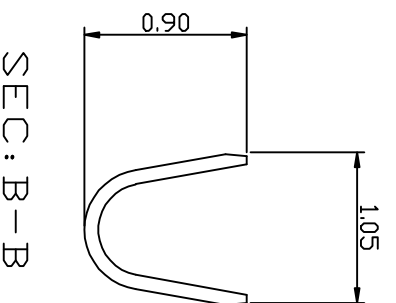
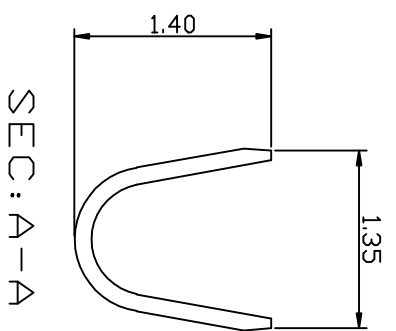
4

SPECIFICATIONS

- Voltage rating: 50V AC,DC
- Current rating: 1A, AC, DC
- Withstanding Voltage: 500V AC/minute
- Insulation resistance: 100MΩ min
- Temperature range: -40℃~+85℃
- Contact resistance: 20MΩ max

TERMINAL

- Part No: T1009PG
- Applicable wire: AWG#28-#32
- Material: Phosphor Bronze
- Finish: Gold-flash



KLIT 深圳市康利通电子科技有限公司

成品规格图

TOLERANCE

0±0.30

.0±0.25

.00±0.20

.000±0.015

TITLE

CHECKED BY

DATE

SCALE

DRAWN BY

UNIT:mm

1:1

VER No

SIZE

李国常

PART No

T1009PG

A

A4

B

C

D

E

F

1

4

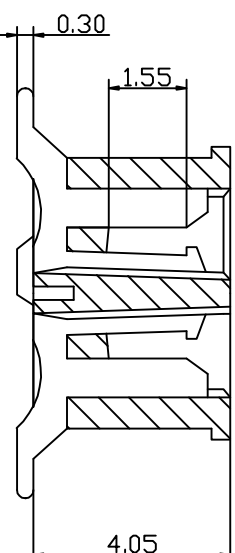
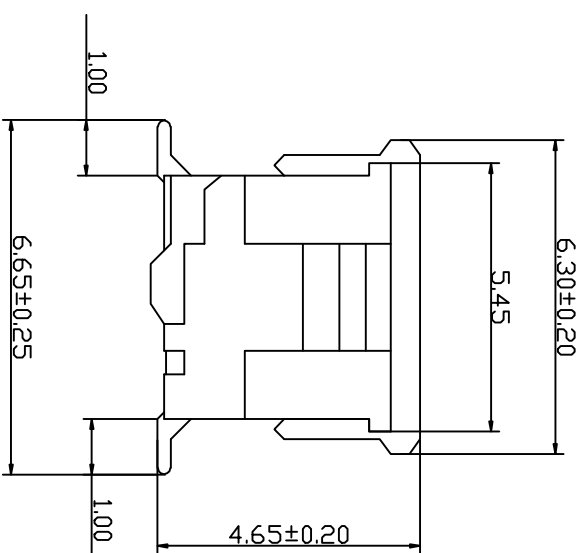
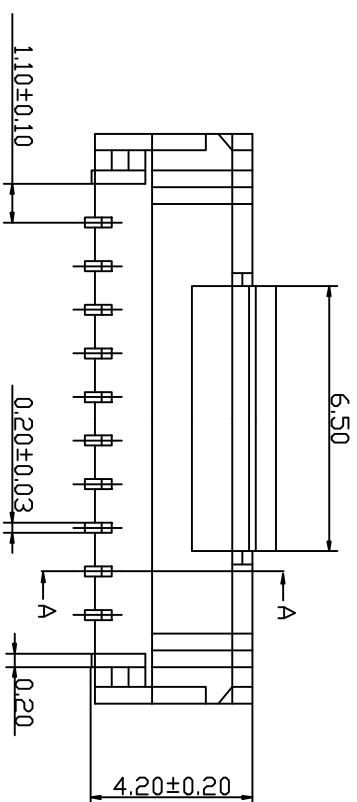
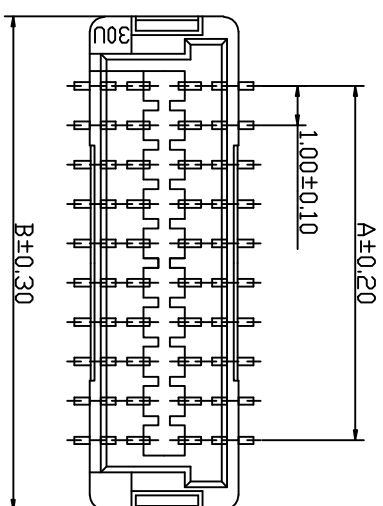
B

C

E

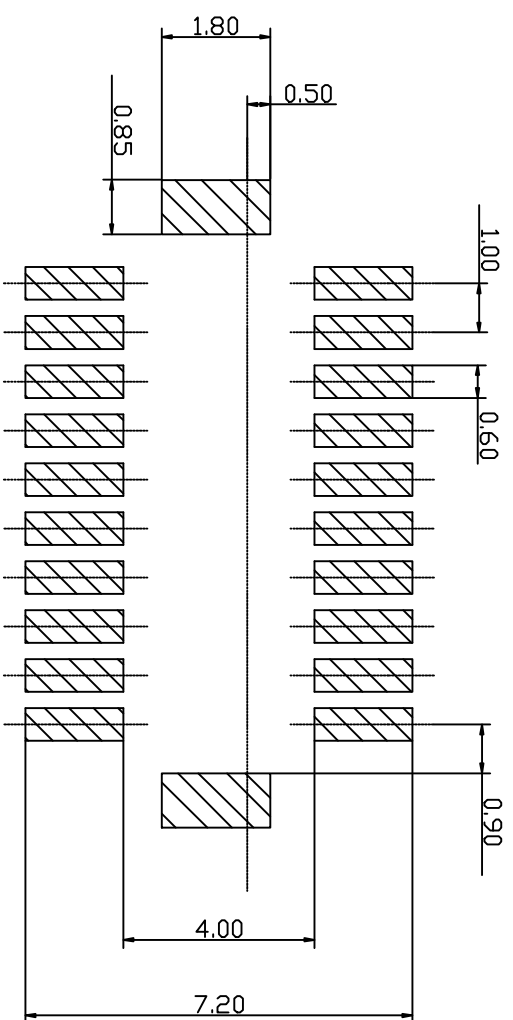
公差表

REV	ECN NO	LOCATIONS	DESCRIPTION	DATE	CHANGER
A			新版本	2016-04-11	李国常



SBC: A-A

Part NO	Dimensions (mm)	
	A	B
W1009SV-2*10	9.00	13.00
W1009SV-2*15	14.00	18.00
W1009SV-2*20	19.00	23.00
W1009SV-2*25	24.00	28.00



P.C.B LAYOUT

KLT 深圳市康利通电子科技有限公司

成品规格图

TO CERANCE

0±0.30

.0±0.25

.00±0.20

.000±0.015

TITLE	成品规格图		SCALE	1:1	VER No	A	SIZE	A4
CHECKED BY	DATE	2016-04-11	SCALE	1:1	VER No	A	SIZE	A4
DRAWN BY	UNIT:mm							
李国常	PART NO	W1009SV-2*NP						

4

4

B

C

D

E

F

1